

Original BMW Parts and Accessories. Installation Instructions.



M Performance Silencer Retrofit Kit.

BMW 3 Series Saloon (G20)

Retrofit kit number

18 30 2 464 496	M Performance silencer
18 30 2 464 500	Set of carbon tailpipe trims

Installation time

The installation time is **approx. 1.0 to 1.5 hours**. This may vary depending on the condition of the vehicle and the equipment in it.

Important information

These installation instructions are primarily designed for use within the BMW dealership organisation and by authorised BMW service companies.

These installation instructions are intended for use by qualified specialist staff trained on BMW cars with the relevant expert knowledge.

All work must be completed using the latest BMW repair manuals, wiring diagrams, servicing manuals and work instructions, in a logical order, using the prescribed tools (special tools), and observing current health and safety regulations.

If you experience installation or functional problems, restrict troubleshooting to approx. 0.5 hours for mechanical work and 1.0 hour for electrical work.

To avoid unnecessary extra work and/or costs, send an inquiry straight away to the technical parts support team via the Aftersales Assistance Portal (ASAP).

Quote the following information:

- VIN,
- retrofit kit part number,
- a detailed description of the problem,
- any work already carried out.

Do not archive the hard copy of these installation instructions, since daily updates are supplied in ASAP.

Pictograms



Denotes instructions that draw your attention to dangers.



Denotes instructions that draw your attention to special features.



Denotes the end of the instruction or warning text.

Installation information

Some of the installation is shown only on the left-hand side of the car; proceed in the same way on the right-hand side of the car.

All illustrations show LHD (left-hand drive) cars; proceed similarly on RHD (right-hand drive) cars.

The tailpipe trims **AA** from section 6 must be installed before the rear silencer system **B** since otherwise the screws for the tailpipe trims **AA** cannot be tightened.

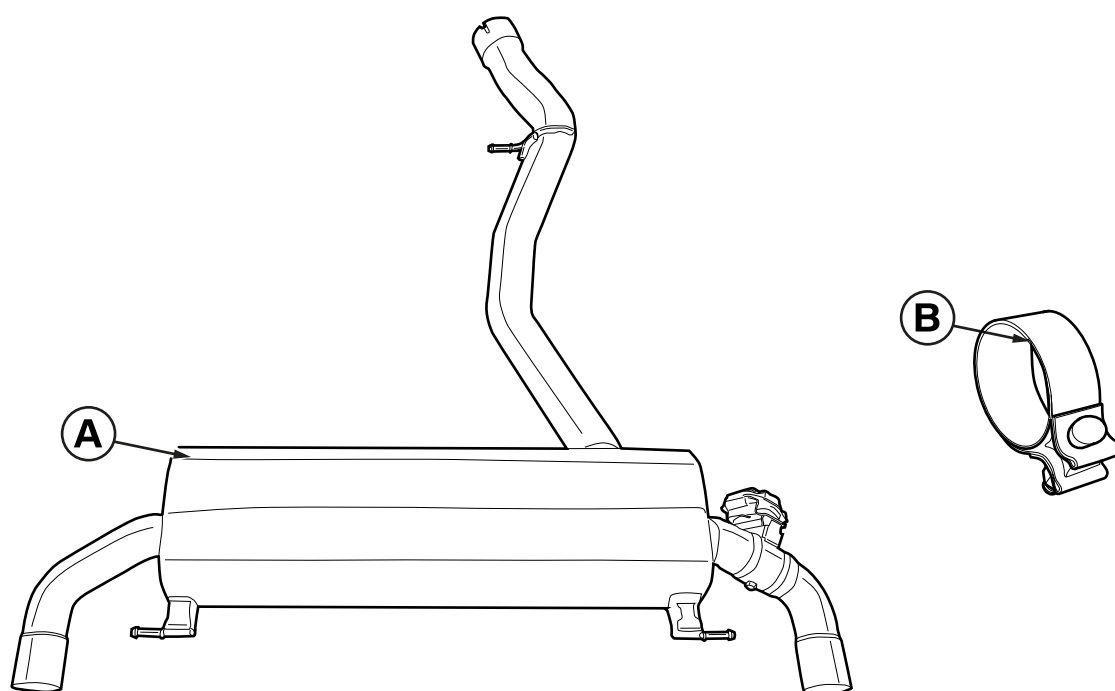
Special tools required

None

Table of contents

Section	Page
1. M Performance silencer parts list	3
2. M Performance carbon tailpipe trims parts list	4
3. Preparatory work	5
4. M Performance silencer installation	6
5. Installing the M Performance round tailpipe trims	7

1. M Performance silencer parts list

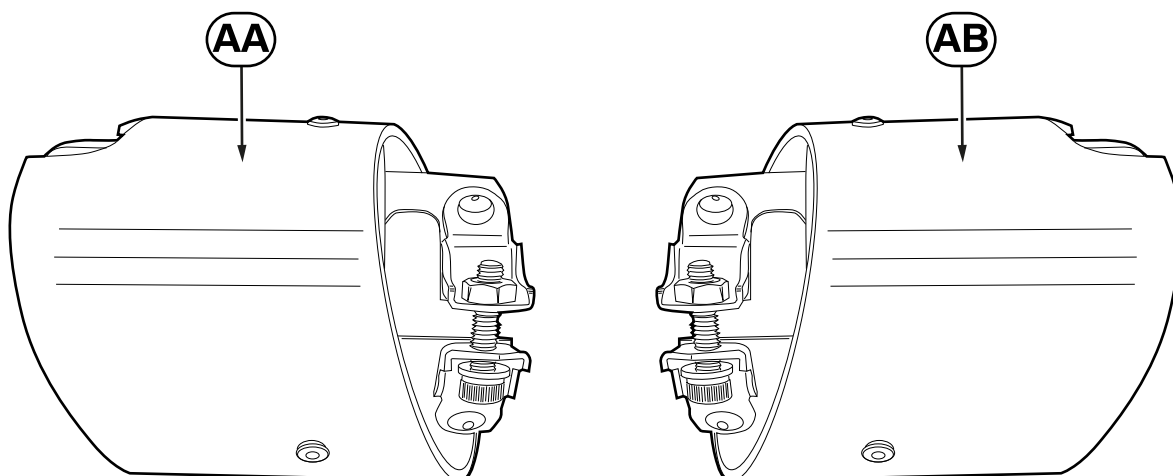


G20 0077 V

Legend

- A** Silencer
- B** Clamping ring

2. M Performance carbon tailpipe trims parts list



G20 0076 V

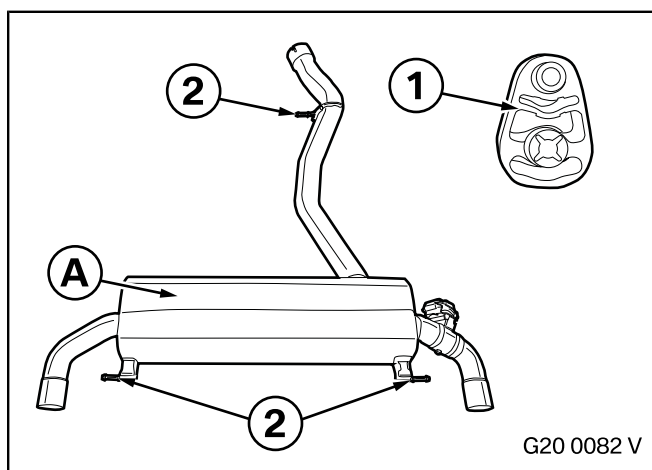
Legend

- AA** Tailpipe trim, left
- AB** Tailpipe trim, right

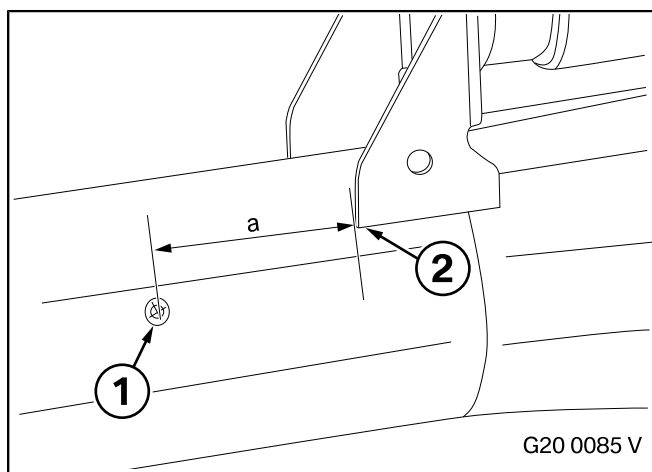
3. Preparatory work

	ISTA/AIR No.
The following components must be removed first of all	
Remove and install the complete exhaust system	18 00 018

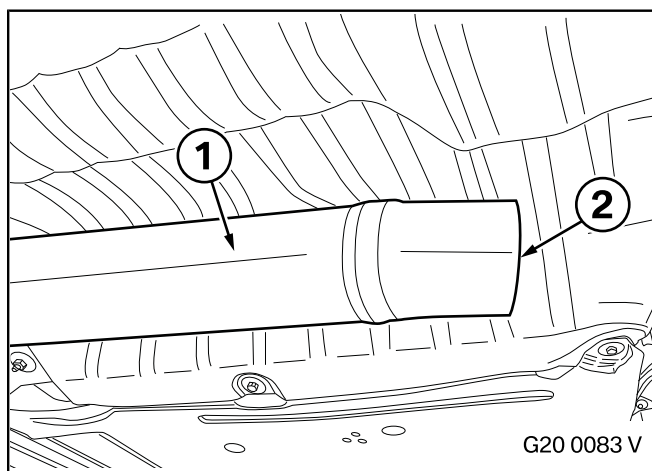
4. M Performance silencer installation



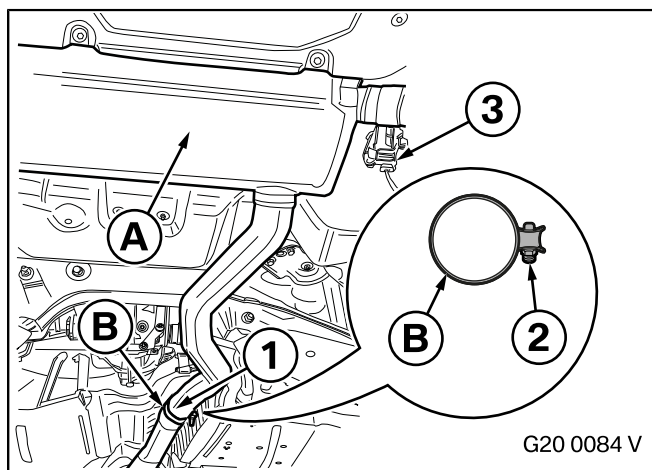
Remove the rubber holders from the standard silencer (1) and push them onto the holders (2) of silencer **A**.



If there is no counterpunch mark (1), apply a mark at a distance of **a = 68 mm** from the edge of the vibration absorber console (2) in the direction of travel.



Cut the standard silencer (1) at the counterpunch mark (2) using suitable equipment and treat the area with the standard anti-corrosion coating.



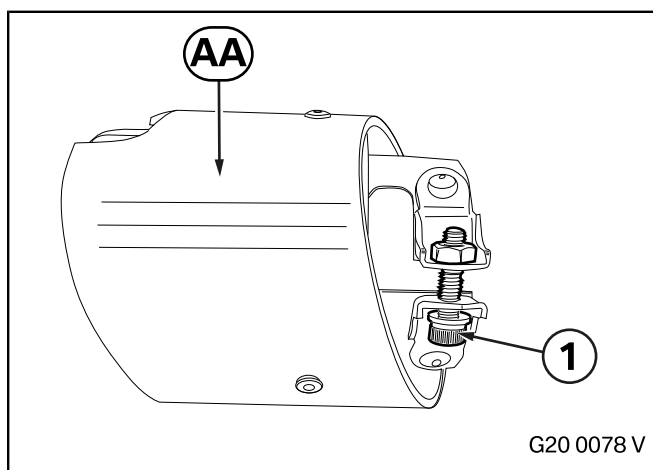
⚠ The tailpipe trims **AA** from section 5 must be installed before the silencer system **B** since otherwise the screws for the tailpipe trims **AA** cannot be tightened. ◀

Fit the clamping rings **B** onto the rear pipe ends (1) of the silencer system **A** and align the screw union (2) towards the outside as shown.

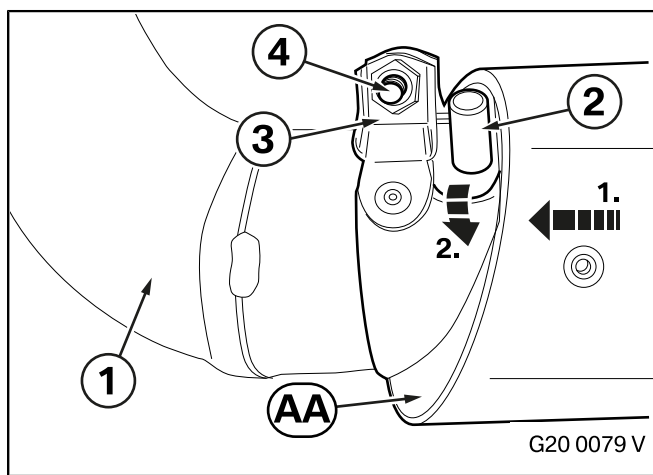
Then install the silencer system **A** as described in **ISTA/AIR**. Tighten the clamping rings **B** with a torque of **55 Nm**.

Connect the cable to the flap actuator (3).

5. Installing the M Performance round tailpipe trims

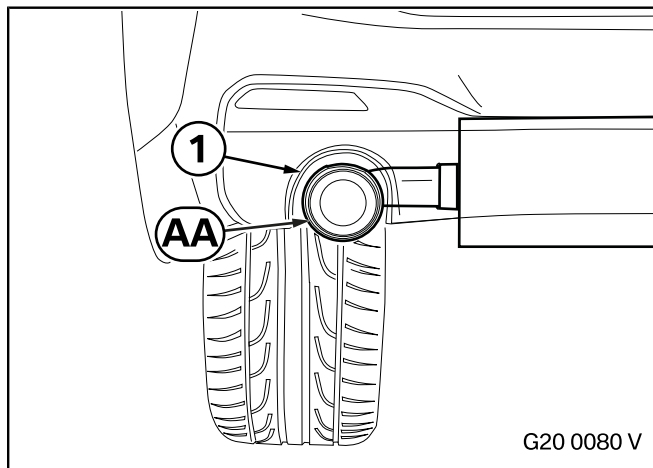


Fully remove the screw (1) from the round tailpipe trim **AA**.

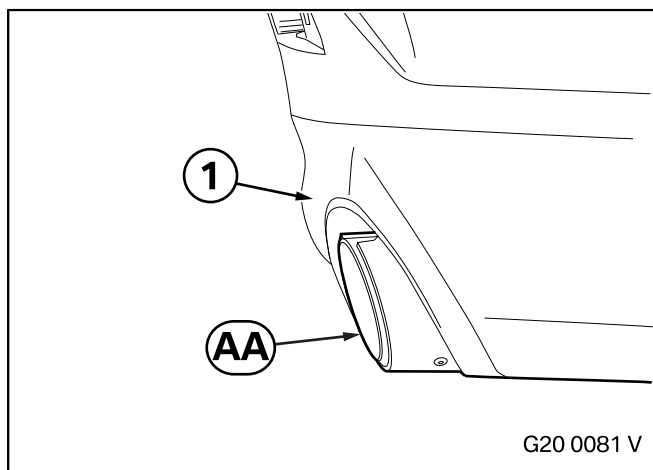


Push the round tailpipe trim **AA** onto the rear silencer (1). Push through the pin (2) between the screw holder (3). Then turn the round tailpipe trim **AA** as far as possible as if it were a bayonet fastener.

Screw in the screw (4) again and tighten it to **5 Nm**.



Check the position of the secured round tailpipe trim **AA** relative to the bumper (1), recentring and realigning it if necessary.



Ensure that round tailpipe trim **AA** does not extend beyond the rear apron (1) (risk of burning) during the installation work and while driving (thermal expansion of the exhaust system). ◀